



# TEACHER'S GUIDE

---

## Supplies

- DVD: Aquatic Invasive Species – Minnesota Waters At Risk (25 minutes)
- Powerpoint presentation about Aquatic Invasive Species (AIS)
- AIS Species Fact Sheets
- Preserved AIS specimens
- Map of Otter Tail County infested waters (powerpoint and handout)
- Map of Minnesota infested waters (powerpoint)

## Time Required

- One class period, with or without homework (45-60 minutes)

## Implementation Ideas/Activity

- Teachers introduce the topic of AIS by showing the DVD (25 minutes).
- Using the powerpoint presentation, briefly go over each species while handing out the actual specimens for students to touch.
- Using the powerpoint presentation, go over where AIS are in Otter Tail County and in Minnesota
- Hand out AIS Species Fact Sheets if desired.

## Student Objectives

1. Understand the basics about AIS
2. Be introduced to some of the AIS in Otter Tail County and Minnesota
3. Learn where AIS are in Otter Tail County and Minnesota

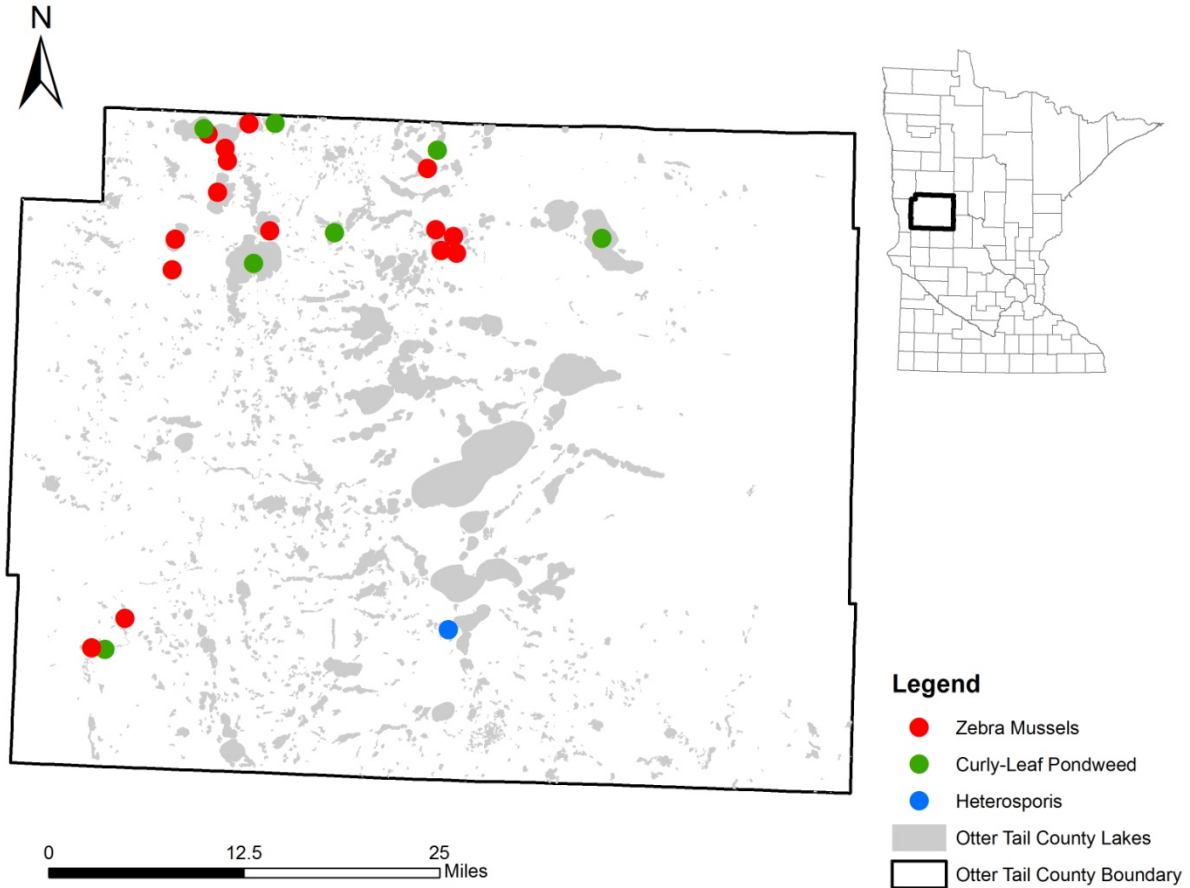
## Sources

Minnesota DNR

<http://www.dnr.state.mn.us/invasives>



## Aquatic Invasive Species in Otter Tail County



### Lakes in Otter Tail County infested with Zebra mussels

- Bass Lake
- Crystal Lake
- Dayton Hollow Reservoir
- Fish Lake
- Kerbs Lake
- Little McDonald Lake
- Little Pelican Lake
- Lake Lizzie
- Mill Pond
- Orwell Reservoir
- Paul Lake
- Pelican Lake
- Prairie Lake
- Rose Lake
- Rusche Lake

As of 4/8/2013

For a current list of infested waters, visit: [http://files.dnr.state.mn.us/eco/invasives/infested\\_waters.pdf](http://files.dnr.state.mn.us/eco/invasives/infested_waters.pdf)